

Internet
you can rely on



SmartShare StraightShaper

SmartShare StraightShaper™ is a hardware solution providing intelligent bandwidth management, guaranteeing all subscribers on the network a fair share of the available internet bandwidth. Users will experience trouble-free use of VoIP, video, SaaS, thin clients, cloud and centralized applications, while the ISP gets a more balanced backbone. Take a look at our product model overview and find the StraightShaper product that meets your needs.

Automatic Bandwidth Management

SmartShare StraightShaper is based on years of experience in developing network equipment for business-critical environments.

Utilizing the unique and patented User Load Balancing™ and Dynamic Quality of Service™ algorithms, the StraightShaper overcomes many of the problems of traditional QoS based appliances when it comes to installation and configuration ease. This allows the ISP to increase the oversubscription factor from the Access Concentrator to the backbone, as all subscribers will enjoy a good internet experience without being starved.

Dynamic QoS™ versus Traditional QoS

Traditional QoS solutions require manual configuration of both the ISP's and the subscribers' networks. Traditional QoS solutions are based on reserving bandwidth for expected use.

This creates a number of disadvantages: Firstly, configuring a subscriber's network for specific QoS settings adds cost to the deployment. Secondly, reserved bandwidth is wasted when not in use. Thirdly, reserved bandwidth has a fixed size limit and can therefore be exceeded, resulting in a degradation of VoIP quality.

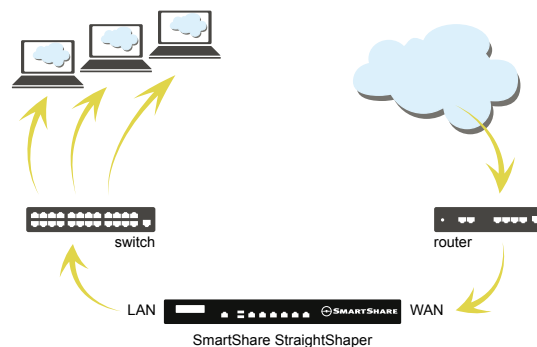
SmartShare Systems' Dynamic QoS™ technology has none of these disadvantages. It processes

all voice, video and data traffic dynamically on the basis of current needs, optimizing internet connection utilization without the need to reserve bandwidth that may never be used. In this way, you can save costs while guaranteeing service quality. The result is a core network that is easier to maintain, better quality ISP services, and increased subscriber satisfaction.

License Upgradeable

The StraightShaper products come in a variety of sizes according to the number of licenses needed.

All models can be upgraded as your subscriber customer base increases. This ensures that you still have room to grow while protecting your WAN optimization appliance investment.



Example of a typical deployment with SmartShare StraightShaper.

Technical Specifications

StraightShaper 300 4000 8000

Key Features

Bandwidth Management	•	•	•
User Load Balancing™	•	•	•
Dynamic QoS™	•	•	•
Deployment as transparent or router	•	•	•
Peer-to-Peer User shaping	•	•	•
Web Policy filter	•	•	•
Real-time statistics and charts	•	•	•
Health Monitor	•	•	•
Latency and packet loss monitoring	•	•	•
Traffic Logging (option)	•	•	•
VLAN support	•	•	•
DMZ support	-	•	•

Additional Features in Router Mode

NAT Router with public IP forwarding	•	•	•
IP Router	•	•	•
SPI Firewall	•	•	•
DHCP Server/Relay	•	•	•
Port forwarding	•	•	•
DNS Server	•	•	•

Technical Specifications

StraightShaper 300 4000 8000

VoIP Support Includes

Skype for Business	•	•	•
Skype	•	•	•
SIP/SIPS	•	•	•
RTP/SRTP	•	•	•
H.323	•	•	•

Thin Client Support Includes

Microsoft RDP	•	•	•
Citrix ICA	•	•	•
Teradici PCoIP	•	•	•

Management and Usability

Plug and Play installation	•	•	•
LCD status display	-	•	•
Web-based user	•	•	•
SNMPv1/2/2c	•	•	•
SYSLOG and email alerts	•	•	•
RESTful AP	•	•	•
Firmware upgradeable	•	•	•
License upgradeable	•	•	•
In-band or out-of-band management	•	•	•
Management access levels (user, administrator)	•	•	•
Reporting with company logo	•	•	•
No maintenance requirements	•	•	•

