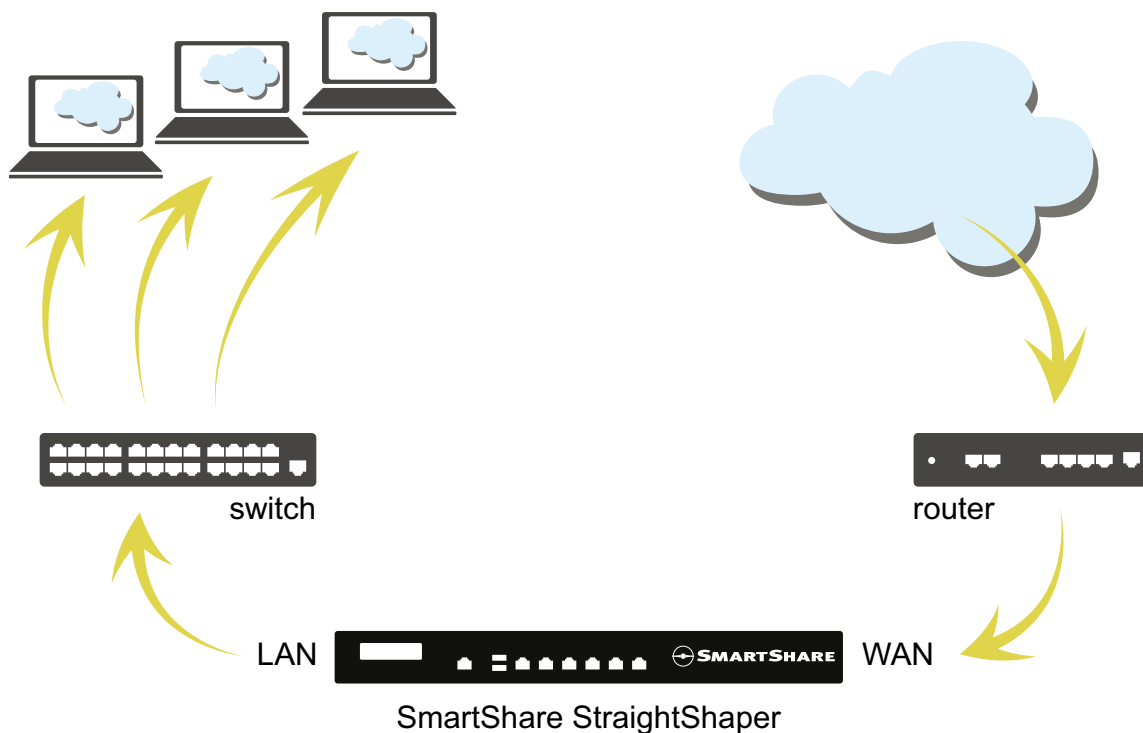


Quick Guide

- SmartShare StraightShaper

1. Connect the StraightShaper between your Router and Switch

- StraightShaper WAN port → Internet router's LAN port.
- StraightShaper LAN port → company network switch. Use straight (gray) Ethernet cables
- *After* connecting the StraightShaper, turn the power on.



2. Check the LED Indicators

- Power: ■ ON
- LAN and WAN ports ■ ON = OK / □ OFF = No Connection. Use a crossed (red) Ethernet cable instead.
- STATUS: ■ ON = starting up (5 minutes max.)
■ □ Blinking green = OK / ■ □ Blinking red = Problem detected.

3. Open the Web GUI

- Open the Web GUI from a PC in your company network.

Web address: The IP Address is shown on the LCD display

Password: admin
Username: admin