



Designed for internet service providers

StraightShaper 8000



SmartShare StraightShaper 8000

SmartShare StraightShaper 8000, designed for internet service providers, is an easy to use WAN optimization appliance with advanced, high capacity bandwidth management capabilities. The SmartShare Dynamic QoS™ and User Load Balancing™ is intelligent bandwidth management that guarantees all users on the network an equal share of the available internet bandwidth. Users will experience trouble-free use of VoIP, video, SaaS, thin clients, cloud and centralized applications, while the ISP gets a more balanced backbone.

SmartShare StraightShaper™ is a hardware solution providing intelligent bandwidth management, guaranteeing all subscribers on the network a fair share of the available internet bandwidth.

Automatic Bandwidth Management

SmartShare StraightShaper is based on years of experience in developing network equipment for business-critical environments. Utilizing the unique and patented User Load Balancing™ and Dynamic Quality of Service™ algorithms, the StraightShaper overcomes many of the problems of traditional QoS based appliances when it comes to installation and configuration ease. This allows the ISP to increase the oversubscription factor from the Access Concentrator to the backbone, as all subscribers will enjoy a good internet experience without being starved.

Dynamic QoS™ versus Traditional QoS

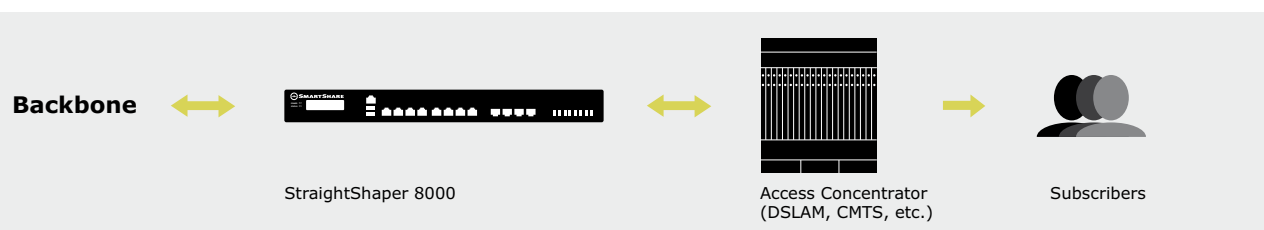
Traditional QoS solutions require manual configuration of both the ISP's and the subscribers' networks. Traditional QoS solutions are based on reserving bandwidth for expected use.

This creates a number of disadvantages: Firstly, configuring a subscriber's network for specific QoS settings adds cost to the deployment. Secondly, reserved bandwidth is wasted when not in use. Thirdly, reserved bandwidth has a fixed size limit and can therefore be exceeded, resulting in a degradation of VoIP quality.

SmartShare Systems' Dynamic QoS™ technology has none of these disadvantages. It processes all voice, video and data traffic dynamically on the basis of current needs, optimizing internet connection utilization without the need to reserve bandwidth that may never be used. In this way, you can save costs while guaranteeing service quality. The result is a core network that is easier to maintain, better quality ISP services, and increased subscriber satisfaction.

License Upgradeable

StraightShaper 8000 is designed for up to 20,000 subscribers and it allows you to upgrade from the minimum of 500 subscribers as your subscriber customer base increases. This ensures that you still have room to grow while protecting your WAN optimization appliance investment.



Typical deployment

Technical Specifications

Key Features

- Bandwidth Management
- User Load Balancing™
- Dynamic QoS™
- Deployment as transparent or router
- Peer-to-Peer User shaping
- Web Policy filter
- Real-time statistics and charts
- Health Monitor
- Latency and packet loss monitoring
- Traffic Logging (option)
- DMZ and VLAN support

Additional Features in Router Mode

- NAT Router with public IP forwarding
- IP Router
- SPI Firewall
- DHCP Server/Relay
- Port forwarding
- DNS Server

VoIP Support Includes

- Lync
- Skype
- SIP/SIPS
- RTP/SRTP
- H.323

Thin Client Support Includes

- Microsoft RDP
- Citrix ICA
- Teradici PCoIP

Management and Usability

- Plug and Play installation
- LCD status display
- Web-based user interface
- SNMPv1/2/2c
- SYSLOG and email alerts
- RESTful API
- Firmware upgradeable
- License upgradeable
- In-band or out-of-band management
- Management access levels (user, administrator)
- Reporting with company logo
- No maintenance requirements

Model Overview StraightShaper 8000

Capacity

| | |
|------------|--|
| IP devices | 250 – 20,000 which can be acquired in 250, 500 or 1,000 IP devices |
| Throughput | 1+1 Gbit/s |
| Flows | 2,000,000 |

Hardware

| | |
|---------------------------|--|
| Chassis | 1U |
| Dimensions (HxWxD) cm. | 4.4 x 43 x 50 |
| Dimensions (HxWxD) in. | 1.7 x 17 x 23 |
| Power supply | Redundant, 1+1 load sharing, hot-plug |
| Typical power consumption | 75-85 watt when using 2-8 ethernet ports |

Ethernet

| | |
|------------------------|--|
| Ethernet ports | LAN, WAN, Ext 1, Ext 2, Ext 3, Ext 4, Ext 5, Ext 6 |
| Port speed and type | 10/100/1000, RJ45 |
| Extension bays | 2 |
| Extension module types | Quad RJ45, Quad SFP socket |

© 2010-2015 SmartShare Systems A/S. All rights reserved.

SmartShare®, StraightShaper™, User Load Balancing™ and Dynamic QoS™ are trademarks of SmartShare Systems A/S. All other product names, company names, trademarks, registered trademarks, logos and symbols are the property of their respective owners.

Portions of SmartShare Systems' products are protected under SmartShare Systems' patents, as well as patents pending.

Specifications subject to change without notice.

info@smartsharesystems.com